

Doosan Robotics Robot Head Jacket

Product Specification

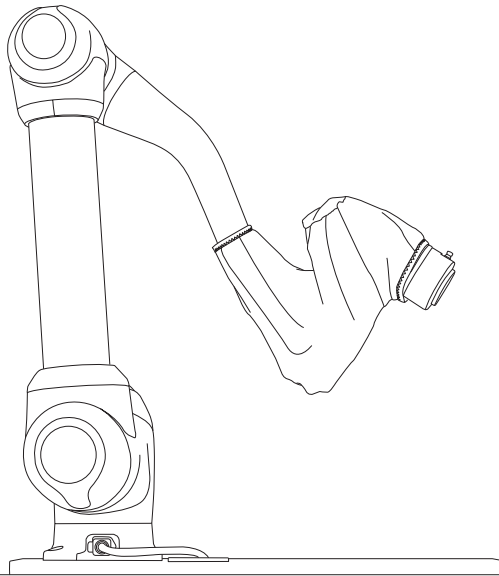
Dimensions	305mm
Material	Spandex, carbon fiber
Color	Navy
Thickness	0.55 ± 0.02 mm
Range of Protection	Liquid including moisture, paint, etc.(85 ± 5°C)

⚠ Caution

- Make sure to install with the robot power turned off, as it is possible to push the Teach button while installing.
- Make sure the Teach button is not pressed due to incorrect installation.
- Make sure not to pull the jacket too much during installation to prevent obscuring robot movement.
- Note that once the jacket is installed, the robot's performance can be limited due to temperature increase according to the operation environment.
- When using unverified liquid, make sure to check the condition of the jacket during use.



Components of Robot Head Jacket

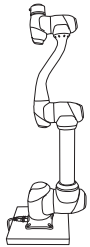


1. Robot Head Jacket

Robot Head Jacket Installation Guide

1. Robot Pose

1.1 Set the robot to its Home Position pose.



① Use the Home Position button of the Jog-Setting menu.

2. Robot Head Jacket Installation

2.1 Install the robot jacket starting from the robot flange.



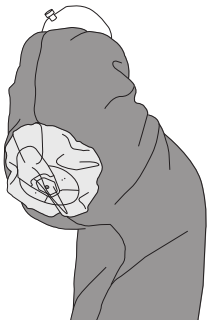
⚠ Make sure to install with the robot power turned off, as it is possible to push the Teach button while installing.

2.2 Make sure not let the robot jacket cover the flange LED.

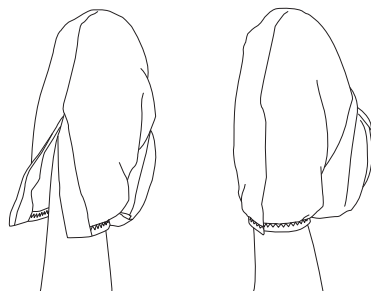


① If the LED is covered, check the LED operation status at the top left of the Teach pendant.

2.3 Position the robot cockpit button in the transparent part of the robot jacket.



2.4 Use Velcro to secure the bottom of the robot head jacket



- Doosan Robotics does not assume responsibility for damages that occur due to maloperation or unintentional accidents.
- The product life cycle may vary according to product damage and wear caused by the operation environment, and Doosan Robotics does not assume responsibility for such damage and wear.
- The user must verify the applicability of the product prior to fully operating the product.